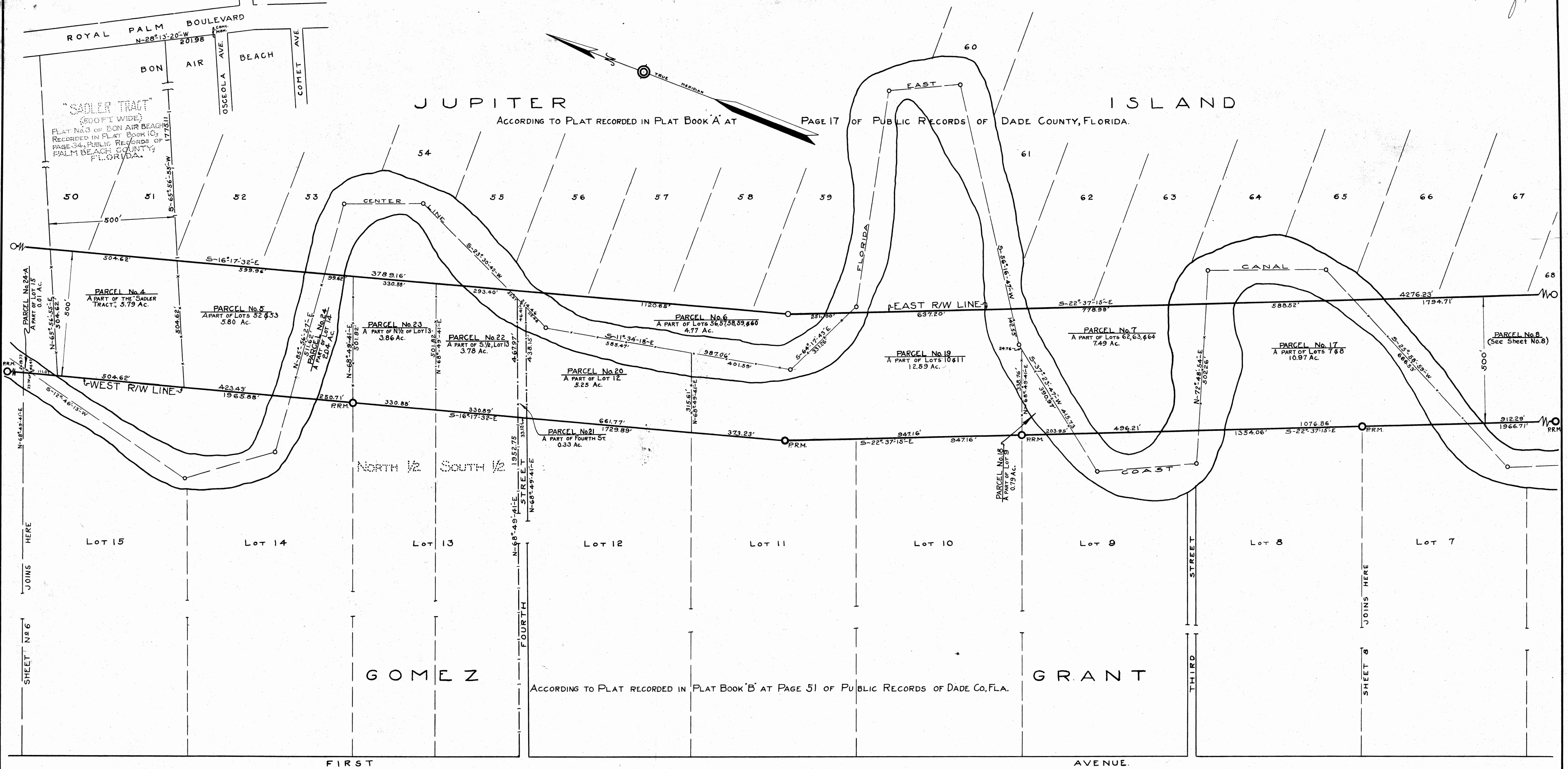


JUPITER ISLAND AND GOMEZ GRANT

Page 7 of 9



**TABULATION OF PARCELS**

Parcel Section	Subdivision	ACREAGE BY PLANIMETER		EXCLUDED		Total	Covered
		Gross Area	W/W Present Canal	W/W Present Waterway	Total		
4 GOMEZ GRANT	A part of "Sadler Tract", JUPITER ISLAND	5.79	0.00	0.00	0.00	5.79	
5 GOMEZ GRANT	A part of Lots 52 & 53, Jupiter Island	5.80	0.00	0.73	0.73	5.07	
6 GOMEZ GRANT	A part of Lots 56 to 60 incl. Jupiter Island	4.77	0.00	2.30	2.30	2.47	
7 GOMEZ GRANT	A part of Lots 62, 63 & 64, Jupiter Island	7.49	0.00	2.53	2.53	4.96	
17 GOMEZ GRANT	A part of Lots 7 & 8	10.97	0.00	3.04	3.04	7.93	
18 GOMEZ GRANT	A part of Lot 9	0.79	0.00	0.62	0.62	0.17	
19 GOMEZ GRANT	A part of Lots 10 & 11	12.59	0.00	1.23	1.23	11.36	
20 GOMEZ GRANT	A part of Lot 12	5.25	0.00	1.17	1.17	4.08	
21 GOMEZ GRANT	A part of FOURTH St.	0.33	0.00	0.07	0.07	0.26	
22 GOMEZ GRANT	A part of South 1/2 of Lot 13	3.78	0.00	0.45	0.45	3.33	
23 GOMEZ GRANT	A part of North 1/2 of Lot 13	3.86	0.00	0.00	0.00	3.86	
24 GOMEZ GRANT	A part of Lot 14	2.04	0.00	1.23	1.23	0.81	
24-A GOMEZ GRANT	A part of Lot 15	0.01	0.00	0.01	0.01	0.00	

**LEGEND**

Township lines are shown thus

Section lines

1/4 Section lines

Parcel boundaries

Existing Canal

Right of Way lines are

Points of Intersection

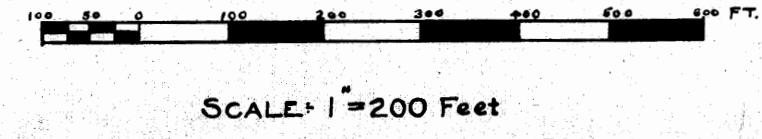
P.R. Monuments

P.R.M. Tie line

Boundary of present Waterway

Property lines outside of R.W.

**INTRACOASTAL WATERWAY**  
 FROM JACKSONVILLE, FLA. TO MIAMI, FLA.  
**FLORIDA EAST COAST CANAL**  
 SHOWING LOCATION AND RIGHT OF WAY THROUGH  
 MARTIN COUNTY, FLORIDA  
 GOMEZ GRANT  
 PREPARED FOR  
**FLORIDA INLAND NAVIGATION DISTRICT**  
 UNDER DIRECTION OF  
 GILBERT A. YOUNGBERG CHIEF ENGINEER  
 BY  
 CHARLTON & DAVIS CIVIL ENGINEERS  
 DEC. 1930  
 SHEET No 7 OF 9 SHEETS



TRACED BY *D.A.G.M.*  
 CHECKED *1.1.1.1.*  
 RECHECKED *6.0.0.*  
 APPROVED *8.8.8.*  
 S.E.